

The buttons along the left side and upper-right will perform the action listed with the click of the mouse or finger.

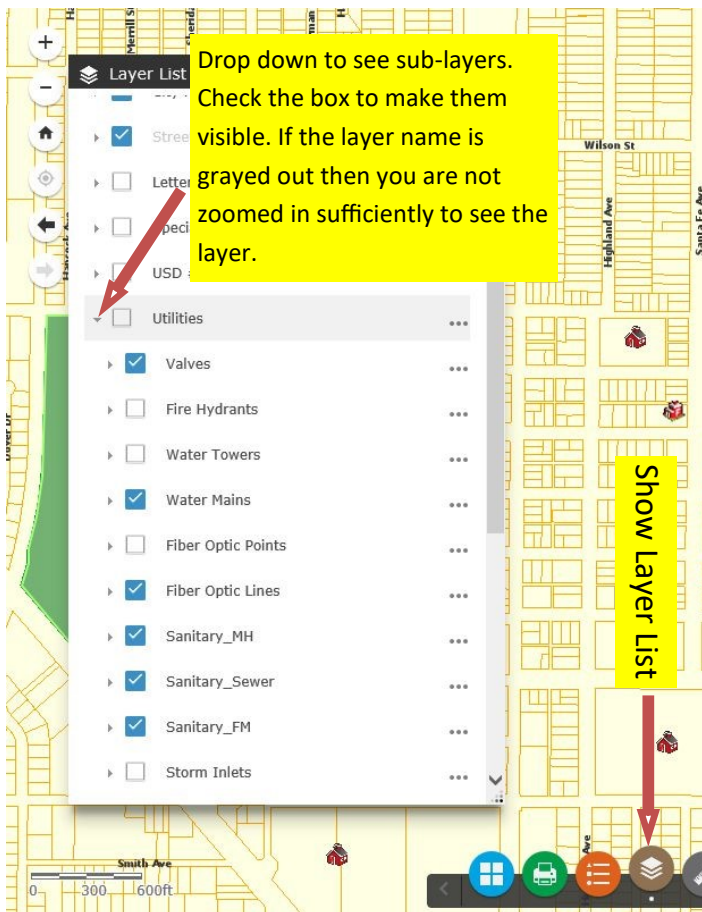
The buttons along the bottom will pop up a new panel with more selections when you click on them.

To pan the map, hold the left mouse button and drag. You can zoom the map with the scroll wheel.

To retrieve information about a layer on the map, left click on the feature.

Be aware that some map layers can only be made visible if you are zoomed in sufficiently.

At the maximum zoom the aerial will be slow to appear behind the map.



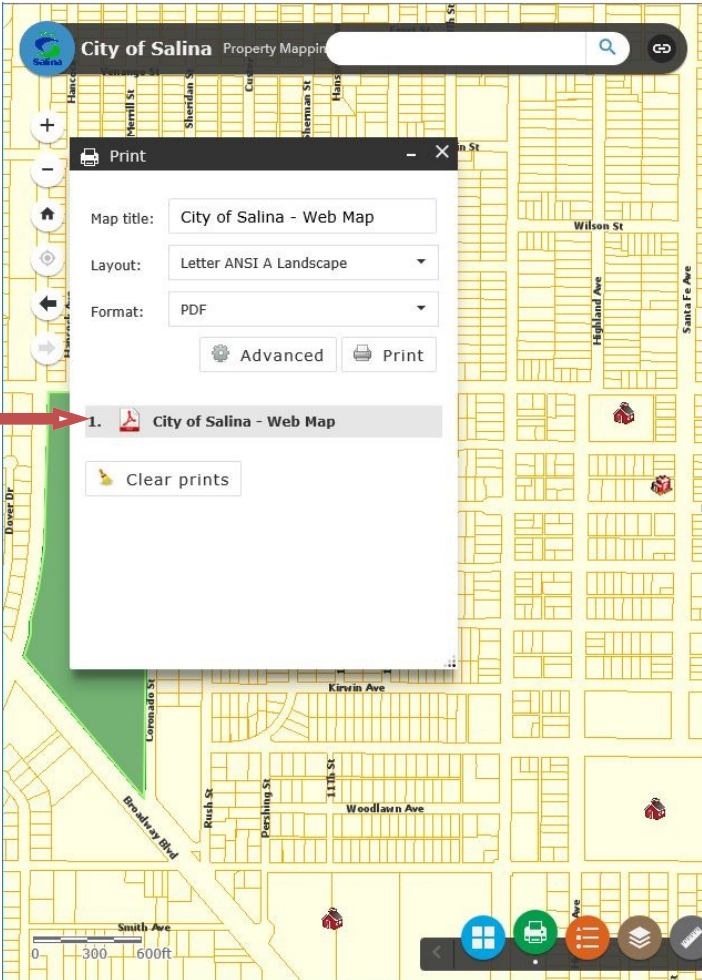
Drop down to see sub-layers. Check the box to make them visible. If the layer name is grayed out then you are not zoomed in sufficiently to see the layer.

Show Layer List

Click the Layer List button to show the panel containing all the layers contained in the map. Layers (or group layers) with a blue check mark are set to be visible once you are zoomed close enough. If the layer name appears gray then you need to zoom in further to see that layer.

The layers that make up a group layer such as Utilities can be turned on and off individually by clicking on the drop-down arrow to the left of the group layer name. In order to see any of the sub-layers the group layer must be set to visible.

File is ready. Click to open.



The print button will pop-up the Print Panel. The map will be printed to a file that you can download or print by opening it in your browser.

You can change the title of your printed map as well as changing the size and orientation of the file. There are various formats for your output the most common of which are PDF and JPG. Click "Advanced" for more options.

When you are ready, click "Print". The page will be created, when it is complete you will see its name just under "Advanced". Click the name to open the file.